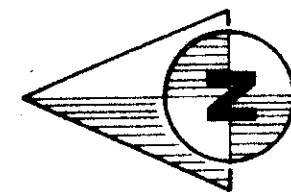


FOX TRAIL

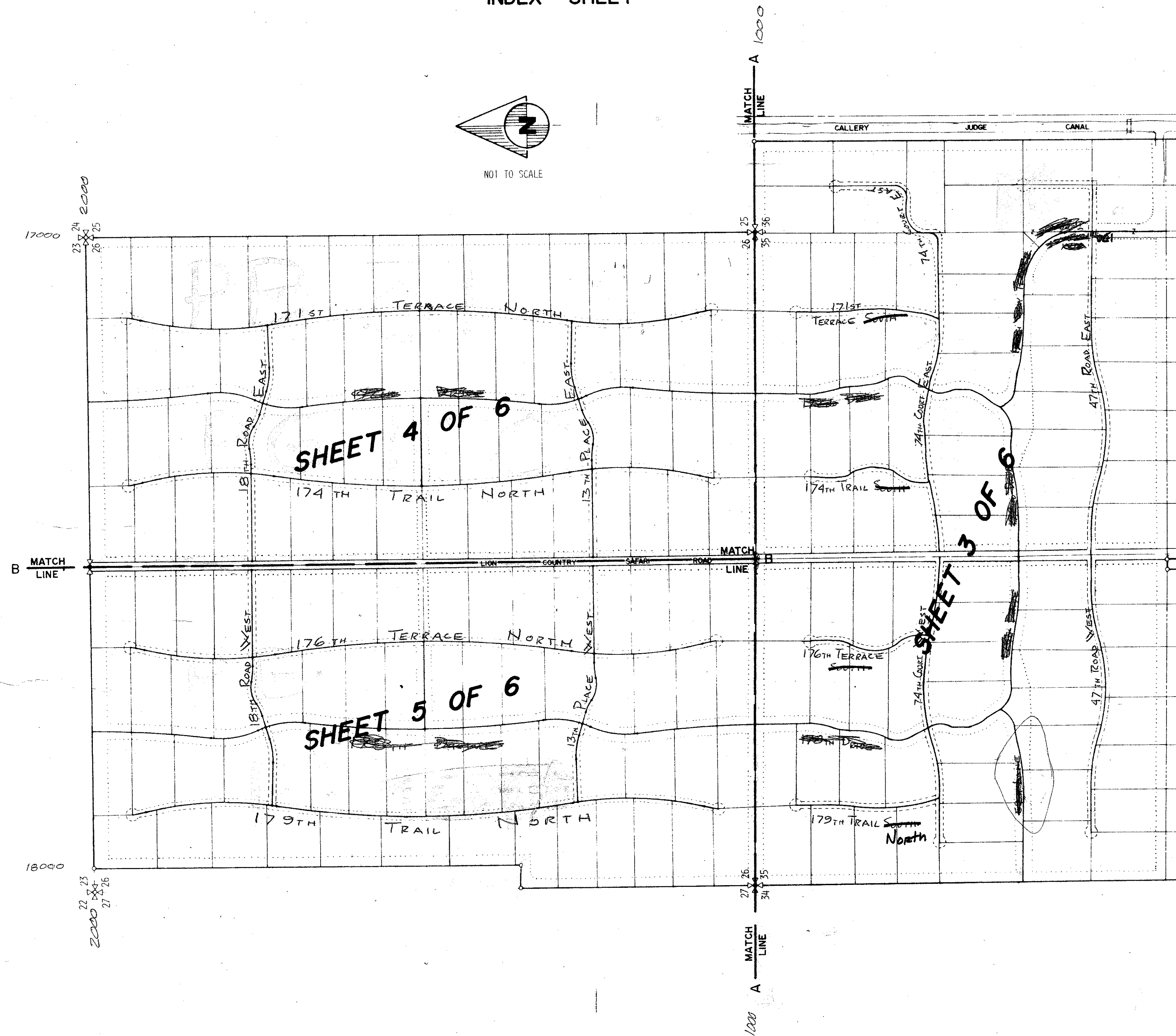
IN SECTIONS 26, 35, AND 36,
TOWNSHIP 43 SOUTH, RANGE 40 EAST
PALM BEACH COUNTY, FLORIDA
JULY 1975

CONRAD W. SCHAEFER CONSULTING ENGINEERS, INC.
PALM BEACH COUNTY, FLORIDA

INDEX SHEET



NOT TO SCALE



STATE OF FLORIDA
COUNTY OF PALM BEACH

THIS PLAT WAS FILED FOR RECORD
AT M. THIS DAY OF 19
AND DULY
RECORDED IN PLAT BOOK NO. ON
PAGE

JOHN B. DUNKLE, CLERK
CIRCUIT COURT

BY D.C.

158

91

91

FOX TRAIL

1000-173

31/158